



www.obdtuning.se

Volvo V70/S60/S80/XC70/XC90 LSM repair

This is a simple guide how to easily repair the light switch module on your Volvo 1999-2007. When the LSM is broken it can disrupt the LIN-bus communication causing several problems. Common problems when the LSM is broken:

- Instrument cluster(DIM) and stereo (AUM) have no background light/no dimming function when trying to adjust it on the LSM.
- Not possible to turn on parking lights.
- The main beam does not stay on when you try to activate it.

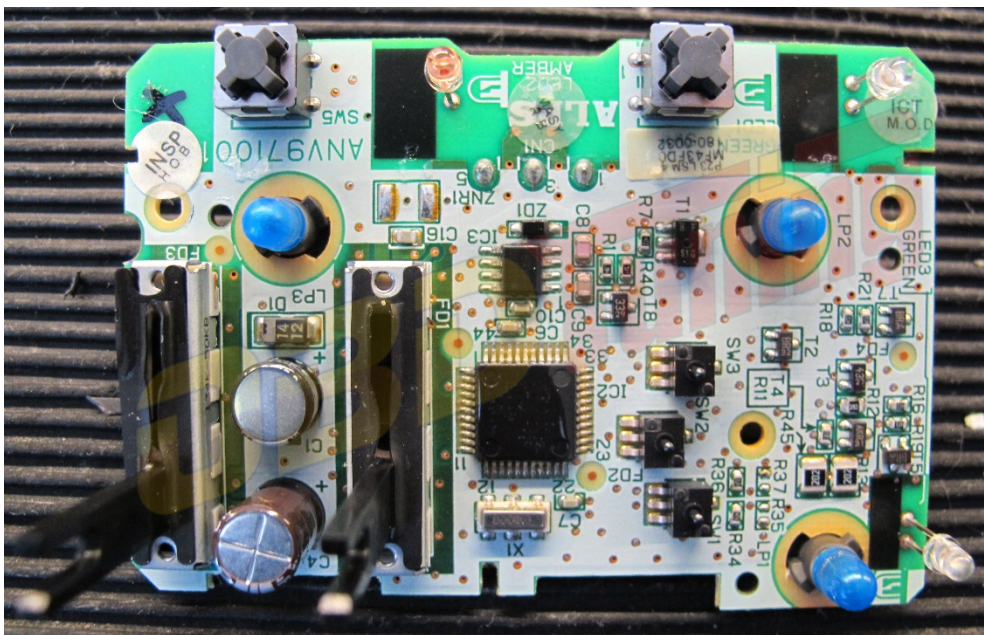
1. So the LSM looks like this. It's held in place by metal springs in the upper and lower side. Pry out the lower or upper side first and then unplug the connector.



2. Unscrew the 2 screws on the back side and remove the cover.



3. Now that you've made it all the way to the PCB it should look something like this. Be careful not to touch the PCB unless you're sure that you're ESD proof



-
- Resolder the components in this area**

- This is a guide made by OBD Tuning Karlstad**

You can visit our Swedish website at www.obdtuning.se

We do not take any responsibility for any damages caused by following this guide. We do NOT recommend any repairs to the PCB unless you are a professional and understand the risks.